

CONTINUED ON CHART 18685

**CAUTION**  
 Limitations on the use of radio signals as aids to navigation are listed in the U.S. Coast Guard Light List and National Oceanic and Atmospheric Administration Publication 117. Radio direction finder bearings to commercial broadcasting stations are shown in blue and should be used with caution. Station positions are shown in red (Accurate location) or in green (Approximate location).

**NOTE A**  
 Within the 10 nautical mile Territorial Sea, established by Presidential Proclamation, some Federal laws apply. The Three Nautical Mile Line, previously identified as the outer limit of the Territorial Sea, is retained as it continues to denote the jurisdictional limit of the other laws. The 12-nautical mile Natural Resource Boundary of the Gulf coast of Florida, Texas, and Puerto Rico, and the Three Nautical Mile Line elsewhere, remain in force within the outer limit of Federal fisheries jurisdiction and the outer limit of the jurisdiction of the states. The 200-nautical mile Exclusive Economic Zone and the 200-nautical mile Continental Shelf are established by Presidential Proclamation. Unless noted by the U.S. Supreme Court, these measures remain subject to modification.

**NOTE B**  
 Channel legends charted in the Santa Cruz Small Craft Harbor are based on the most recent surveys conducted by the Corps of Engineers. The Santa Cruz Small Craft Harbor entrance is subject to seasonal shoaling and dredging operations from September through May. The Santa Cruz Hydrographic Report states that the inner harbor has been changed from 7 to 12 feet in depth. Many channels are frequently marked to mark the shifting channel. Mariners without local knowledge should contact the Harbormaster on VHF CH 16 (22.8 MHz) or on Channel 18 (161.4 MHz) between 0800 and 1700 daily. Mariners should not attempt to enter the harbor when there are heavy swells without first contacting the Harbormaster.

**NOTE C**  
 Channel legends charted in the Santa Cruz Small Craft Harbor are based on the most recent surveys conducted by the Corps of Engineers. The Santa Cruz Small Craft Harbor entrance is subject to seasonal shoaling and dredging operations from September through May. The Santa Cruz Hydrographic Report states that the inner harbor has been changed from 7 to 12 feet in depth. Many channels are frequently marked to mark the shifting channel. Mariners without local knowledge should contact the Harbormaster on VHF CH 16 (22.8 MHz) or on Channel 18 (161.4 MHz) between 0800 and 1700 daily. Mariners should not attempt to enter the harbor when there are heavy swells without first contacting the Harbormaster.

**NOAA WEATHER RADIO BROADCASTS**  
 The NOAA Weather Radio stations listed below provide continuous weather broadcasts. The reception range is typically 20 to 40 nautical miles from the antenna site, but can be as much as 100 nautical miles for stations at high elevations.

**MONTEREY BAY NATIONAL MARINE SANCTUARY**  
 (protection area: 15 CFR 922; see note A)

**RESTRICTED AREA 304 1750**  
 (see note A)

**RESTRICTED AREA 304 1750**  
 (see note A)

**RESTRICTED AREA 304 1750**  
 (see note A)

**RESTRICTED AREA 304 1750**  
 (see note A)

**CAUTION**  
 Improved channels shown by broken lines are subject to shoaling, particularly at the edge.

**CAUTION**  
 Temporary changes or defects in aids to navigation are not indicated on this chart. See Local Notice to Mariners.

**HEIGHTS**  
 Heights in feet above Mean High Water. Hydrography and topography by the National Ocean Service, Coast Survey, with additional data from the Corps of Engineers, Geological Survey, and U.S. Coast Guard.

**MOSS LANDING HARBOR**  
 SURVEYS TO 2014

| NAME OF CHANNEL   | DATE SURVEYED | DEPTH | DEPTH | DEPTH | DEPTH | DEPTH |
|-------------------|---------------|-------|-------|-------|-------|-------|
| ANCHORAGE CHANNEL | 11            | 11    | 11    | 11    | 11    | 11    |
| ANCHORAGE CHANNEL | 11            | 11    | 11    | 11    | 11    | 11    |
| ANCHORAGE CHANNEL | 11            | 11    | 11    | 11    | 11    | 11    |
| ANCHORAGE CHANNEL | 11            | 11    | 11    | 11    | 11    | 11    |
| ANCHORAGE CHANNEL | 11            | 11    | 11    | 11    | 11    | 11    |

**NOTE D**  
 Channel legends charted in the Santa Cruz Small Craft Harbor are based on the most recent surveys conducted by the Corps of Engineers. The Santa Cruz Small Craft Harbor entrance is subject to seasonal shoaling and dredging operations from September through May. The Santa Cruz Hydrographic Report states that the inner harbor has been changed from 7 to 12 feet in depth. Many channels are frequently marked to mark the shifting channel. Mariners without local knowledge should contact the Harbormaster on VHF CH 16 (22.8 MHz) or on Channel 18 (161.4 MHz) between 0800 and 1700 daily. Mariners should not attempt to enter the harbor when there are heavy swells without first contacting the Harbormaster.

**MONTEREY BAY NATIONAL MARINE SANCTUARY**  
 (protection area: 15 CFR 922; see note A)

**RESTRICTED AREA 304 1750**  
 (see note A)

**RESTRICTED AREA 304 1750**  
 (see note A)

**RESTRICTED AREA 304 1750**  
 (see note A)

**RESTRICTED AREA 304 1750**  
 (see note A)

**CAUTION**  
 Additional uncharted submarine pipelines and submarine cables may exist within the area of this chart. Not all submarine pipelines and cables are shown. All submarine pipelines and cables shown are shown as:

**CAUTION**  
 Submarine pipelines and submarine cables shown as dashed lines are shown as:

**CAUTION**  
 Submarine pipelines and submarine cables shown as solid lines are shown as:

**CAUTION**  
 Submarine pipelines and submarine cables shown as dashed lines are shown as:

**CAUTION**  
 Submarine pipelines and submarine cables shown as solid lines are shown as:

**CAUTION**  
 Submarine pipelines and submarine cables shown as dashed lines are shown as:

**CAUTION**  
 Submarine pipelines and submarine cables shown as solid lines are shown as:

**CAUTION**  
 Submarine pipelines and submarine cables shown as dashed lines are shown as:

**CAUTION**  
 Submarine pipelines and submarine cables shown as solid lines are shown as:

**CAUTION**  
 Submarine pipelines and submarine cables shown as dashed lines are shown as:

**CAUTION**  
 Submarine pipelines and submarine cables shown as solid lines are shown as:

**CAUTION**  
 Submarine pipelines and submarine cables shown as dashed lines are shown as:

**CAUTION**  
 Submarine pipelines and submarine cables shown as solid lines are shown as:

**CAUTION**  
 Submarine pipelines and submarine cables shown as dashed lines are shown as:

**CAUTION**  
 Submarine pipelines and submarine cables shown as solid lines are shown as:

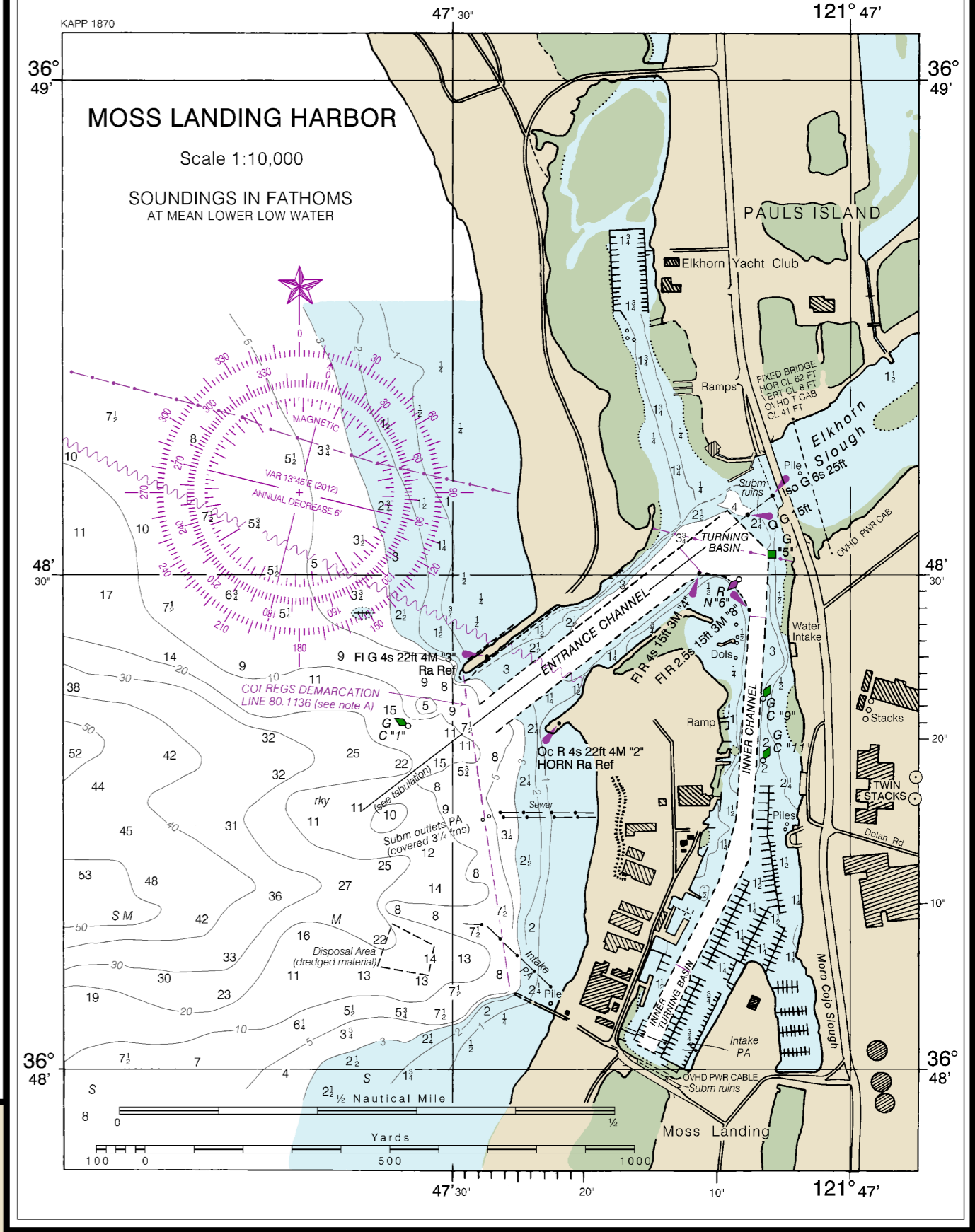
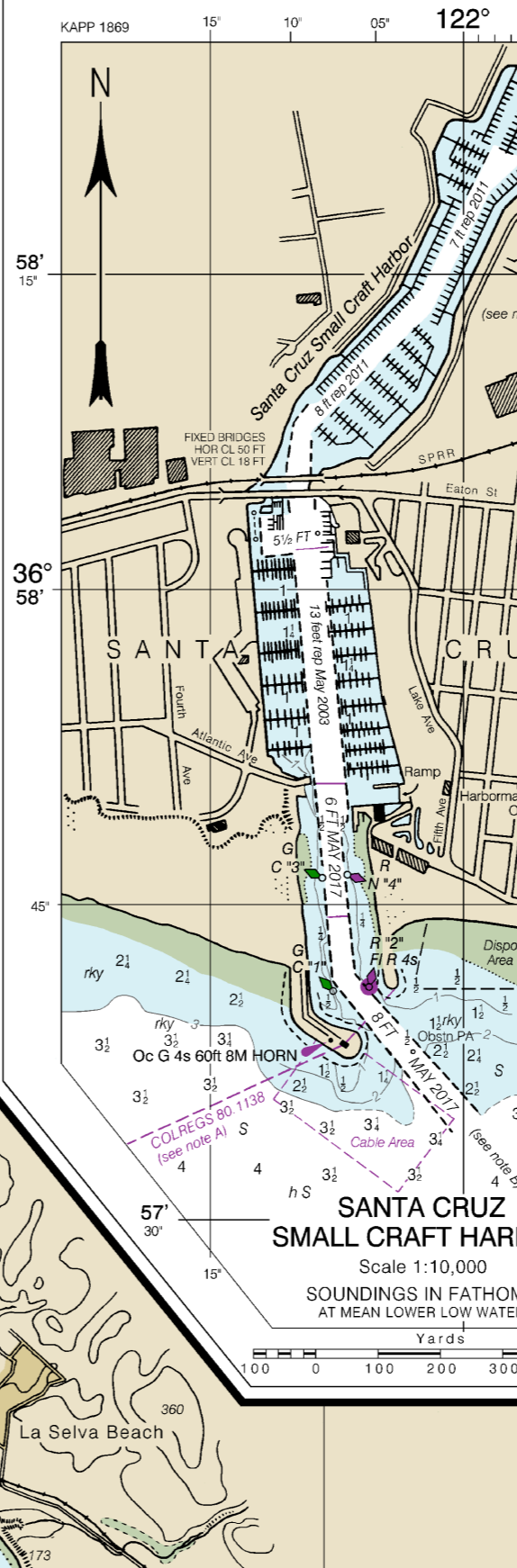
**CAUTION**  
 Submarine pipelines and submarine cables shown as dashed lines are shown as:

**CAUTION**  
 Submarine pipelines and submarine cables shown as solid lines are shown as:

**CAUTION**  
 Submarine pipelines and submarine cables shown as dashed lines are shown as:

**CAUTION**  
 Submarine pipelines and submarine cables shown as solid lines are shown as:

**CAUTION**  
 Submarine pipelines and submarine cables shown as dashed lines are shown as:



**UNITED STATES - WEST COAST CALIFORNIA**

**MONTEREY BAY**

Scale 1:50,000 at Lat 36° 48' N  
 North American Datum of 1983  
 (World Geodetic System 1984)

**SOUNDINGS IN FATHOMS AT MEAN LOWER LOW WATER**

Additional information can be obtained at [nauticalcharts.noaa.gov](http://nauticalcharts.noaa.gov)

| NAME         | PLACEMENT                | Mean High | Mean Low | Mean |
|--------------|--------------------------|-----------|----------|------|
| Moss Landing | 36° 48' 12" N 121° 47' W | 5.2       | 4.6      | 4.9  |
| Santa Cruz   | 36° 58' 12" N 121° 47' W | 5.3       | 4.6      | 4.9  |
| Monterey     | 37° 01' 12" N 121° 47' W | 5.3       | 4.6      | 4.9  |

**TOTAL INFORMATION**  
 (See note A for symbols and abbreviations, see Chart No. 1)

**ABBREVIATIONS**  
 For complete list of Symbols and Abbreviations, see Chart No. 1.

**ABBREVIATIONS**  
 For complete list of Symbols and Abbreviations, see Chart No. 1.

| Symbol | Meaning | Symbol | Meaning |
|--------|---------|--------|---------|
| ADP    | ADP     | ADP    | ADP     |
| ADP    | ADP     | ADP    | ADP     |
| ADP    | ADP     | ADP    | ADP     |
| ADP    | ADP     | ADP    | ADP     |
| ADP    | ADP     | ADP    | ADP     |

**NOTE A**  
 Navigation regulations are contained in Chapter 2, U.S. Coast Pilot 7. Additional regulations for use of the chart may be obtained from the Environmental Protection Agency (EPA). See U.S. Coast Pilot 7 for additional information. Regulations are not shown on this chart.

**NOTE B**  
 The outlined areas represent the limits of the most recent hydrographic survey information that has been evaluated for charting. Surveys have been conducted in the diagram by date and type of survey. Changes maintained by the U.S. Army Corps of Engineers are particularly noteworthy and are not shown on this diagram. Refer to Chapter 1, U.S. Coast Pilot 7.

**NOTE C**  
 The horizontal datum of the chart is the North American Datum of 1983 (NAD 83), which is based on the Geoid Height Model (GHM) of the World Geodetic System 1984 (WGS 84). Geographic coordinates referred to the North American Datum of 1983 must be corrected an average of 0.1 foot (eastward and 0.3 foot westward) to agree with this chart.

