

# NORTH END OF LAKE MICHIGAN INCLUDING GREEN BAY

Polyconic Projection  
Scale 1:240,000  
North American Datum of 1983  
(World Geodetic System 1984)  
SOUNDINGS IN FEET

PLANE OF REFERENCE OF THIS CHART (Low Water Datum) ..... 577.5 ft. Referred to mean water level at Ann Arbor, Quebec, International Great Lakes Datum (1985).

SAUNING DIRECTIONS (Bearings of sailing courses are true and distances given thereon are in statute miles between points of departure. The true bearing between any two points on this chart may be determined by connecting the two points with a straight line and measuring the angle of its intersection with a true course line or near meridian of the course.)

SYMBOLS AND ABBREVIATIONS: For complete list of symbols and abbreviations see Chart No. 1.

BRIDGE AND OVERHEAD CABLE CLEARANCES: When the water surface is above Low Water Datum, bridge and overhead clearances are reduced correspondingly. For clearance see U.S. Coast Pilot.

OMISSION OF DETAIL: Owing to the small scale many aids to navigation, depths, contours and topographic features have been omitted. For detail consult Coast and Harbor Charts.

NOTE: This chart has been compiled from the best available information and is not intended to be used as a substitute for a more detailed chart. It is not to be used for navigation in areas where a more detailed chart is available.

NOTE: This chart has been compiled from the best available information and is not intended to be used as a substitute for a more detailed chart. It is not to be used for navigation in areas where a more detailed chart is available.

NOTE: This chart has been compiled from the best available information and is not intended to be used as a substitute for a more detailed chart. It is not to be used for navigation in areas where a more detailed chart is available.

NOTE: This chart has been compiled from the best available information and is not intended to be used as a substitute for a more detailed chart. It is not to be used for navigation in areas where a more detailed chart is available.

NOTE: This chart has been compiled from the best available information and is not intended to be used as a substitute for a more detailed chart. It is not to be used for navigation in areas where a more detailed chart is available.

NOTE: This chart has been compiled from the best available information and is not intended to be used as a substitute for a more detailed chart. It is not to be used for navigation in areas where a more detailed chart is available.

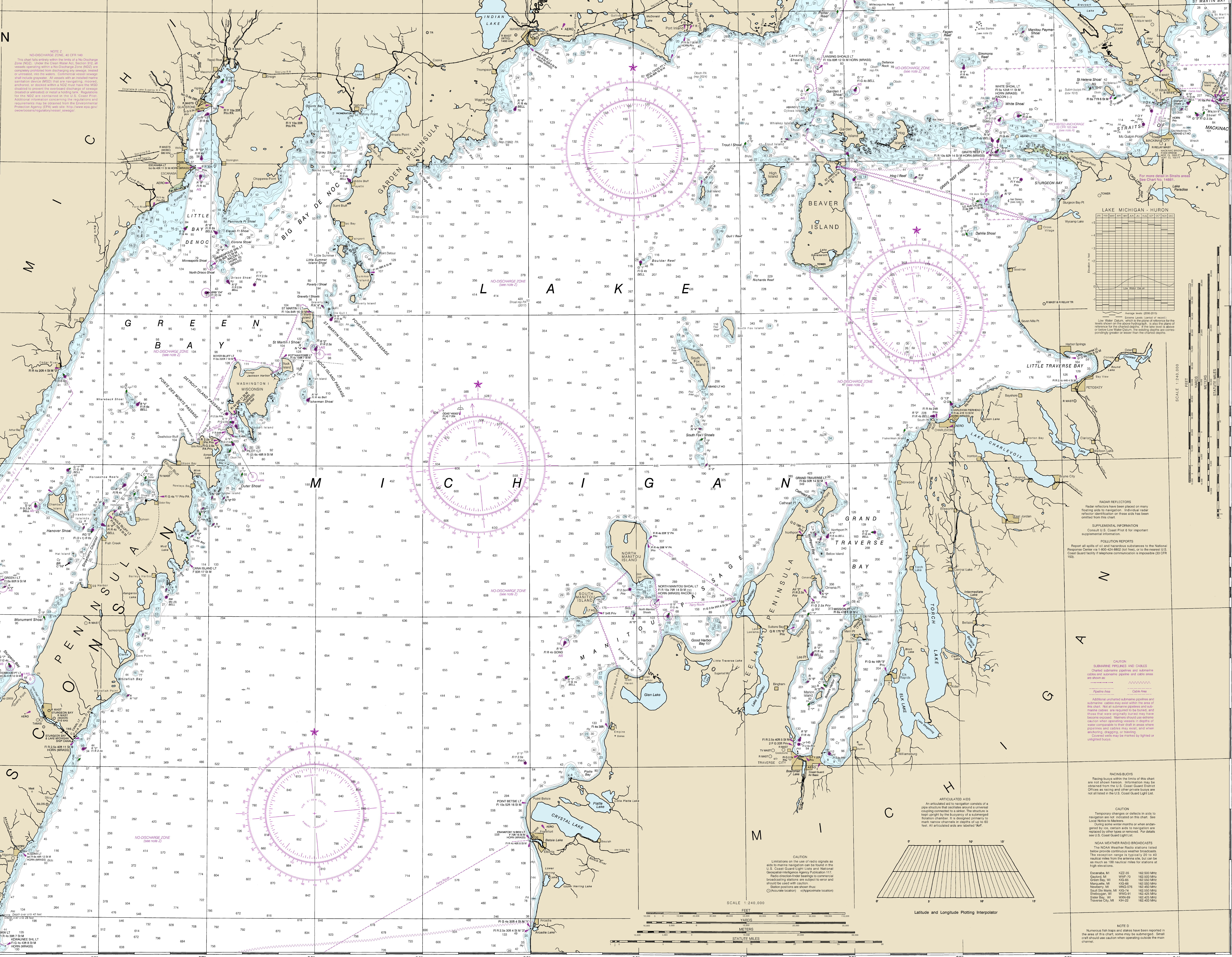
NOTE: This chart has been compiled from the best available information and is not intended to be used as a substitute for a more detailed chart. It is not to be used for navigation in areas where a more detailed chart is available.

NOTE: This chart has been compiled from the best available information and is not intended to be used as a substitute for a more detailed chart. It is not to be used for navigation in areas where a more detailed chart is available.

NOTE: This chart has been compiled from the best available information and is not intended to be used as a substitute for a more detailed chart. It is not to be used for navigation in areas where a more detailed chart is available.

NOTE: This chart has been compiled from the best available information and is not intended to be used as a substitute for a more detailed chart. It is not to be used for navigation in areas where a more detailed chart is available.

NOTE: This chart has been compiled from the best available information and is not intended to be used as a substitute for a more detailed chart. It is not to be used for navigation in areas where a more detailed chart is available.



Published at Washington, D.C.  
U.S. DEPARTMENT OF COMMERCE  
NATIONAL OCEANIC AND ATMOSPHERIC ADMINISTRATION  
NATIONAL COAST AND GEODETIC SERVICE  
COAST SURVEY