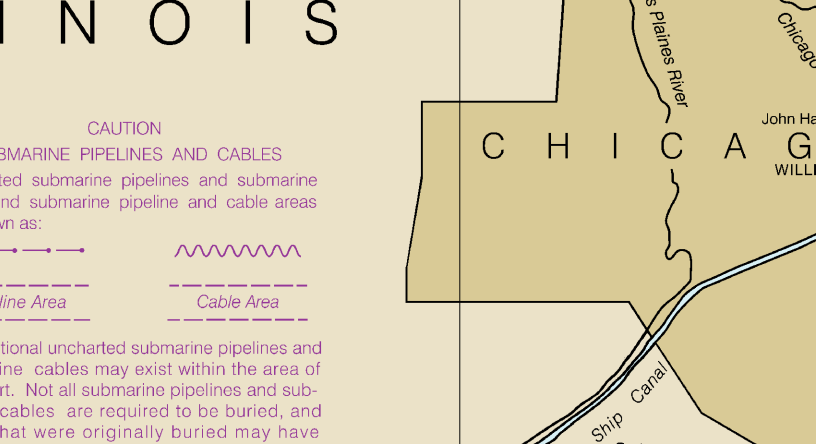
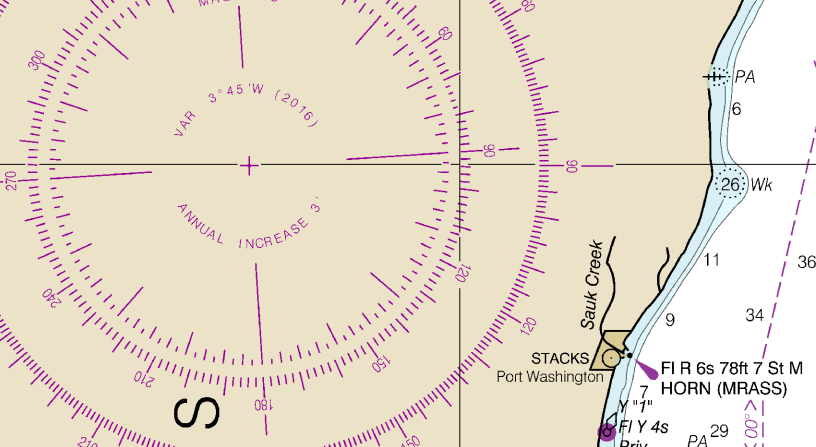
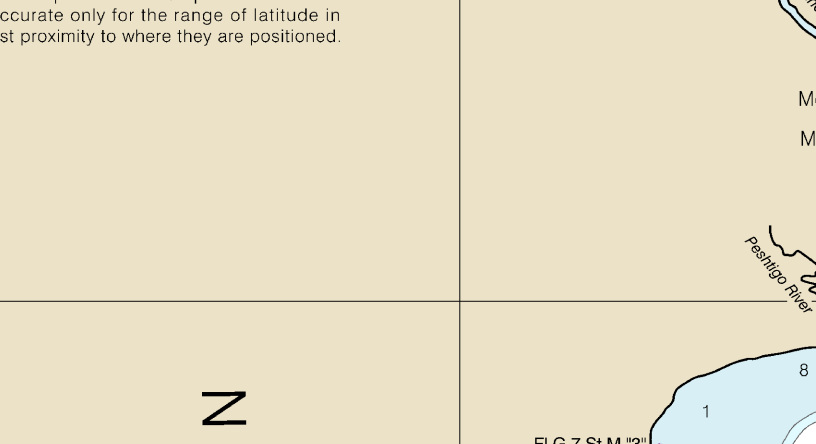
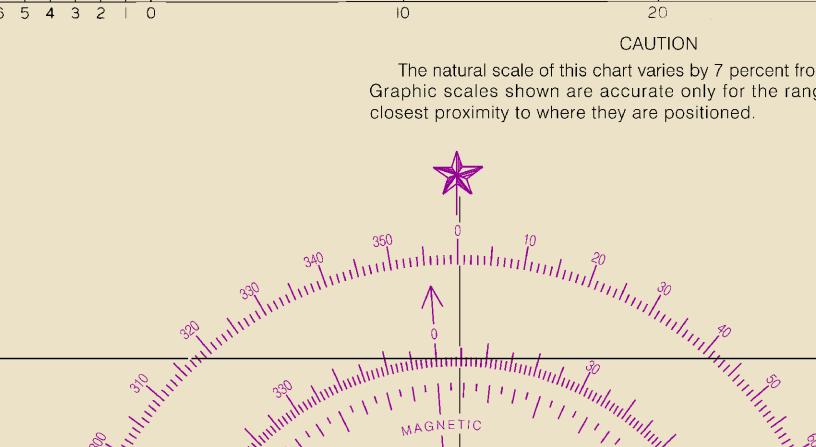
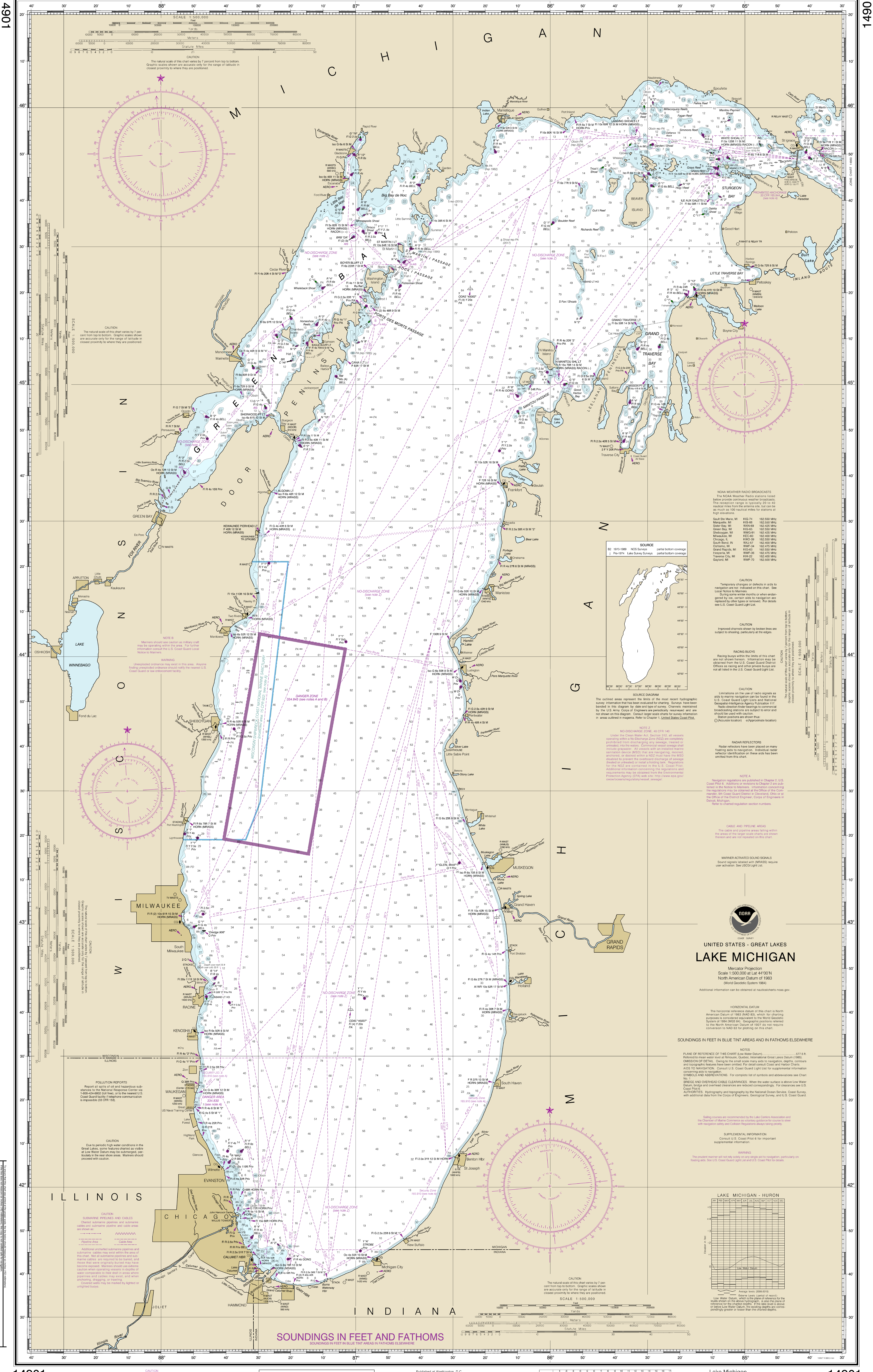


Chart No. 1606, Nov. 1986, 4477-1383



NOAA WEATHER RADIO BROADCASTS
The NOAA Weather Radio stations listed below provide continuous weather broadcasts. The reception range is typically 20 to 40 nautical miles from the antenna site, but can be as much as 100 nautical miles for stations at high elevations.

Station	Freq.	Power
Sault Ste. Marie, MI	162.550 MHz	100 W
Milwaukee, WI	162.550 MHz	100 W
Sheridan, WI	162.550 MHz	100 W
Chicago, IL	162.550 MHz	100 W
Green Bay, WI	162.550 MHz	100 W
Sturgeon Bay, WI	162.550 MHz	100 W
Traverse City, MI	162.550 MHz	100 W
Gaylord, MI	162.550 MHz	100 W

CAUTION
Temporary changes or defects in aids to navigation are not indicated on this chart. See Local Notices to Mariners.
During same water months or when endorsed by one of our state aids to navigation are indicated by other types of symbols. For details see U.S. Coast Guard Light List.

CAUTION
Improved channels shown by broken lines are subject to shoaling, particularly at the edges.

CAUTION
Limitations on the use of radio signals as aids to navigation can be found in the U.S. Coast Guard Light List and National Geospatial Intelligence Agency Publication 117. Radio direction finder bearings to commercial broadcasting stations are subject to error and should be used with caution. Station positions are shown in Δ (Circulate location) (adjacent location).

CAUTION
Radar reflectors have been placed on many leading aids to navigation. Individual radar reflector distribution on these aids has been omitted from this chart.

NOTE 1
Navigation regulations are published in Chapter 5, U.S. Coast Pilot 8. Additional regulations for the Great Lakes may be obtained at the Office of the Chief of the District Engineers, Corps of Engineers in Charge, Detroit, Michigan.

CABLE AND PIPELINE AREAS
The cable and pipeline areas falling within the area of this chart are shown in blue and are not reported on this chart.

MARKER ACTIVATED SOUND SIGNALS
Sound signals labeled with (MARS) require user activation. See USCG Light List.

**UNITED STATES - GREAT LAKES
LAKE MICHIGAN**
Mercator Projection
Scale 1:500,000 at Lat 44° 0' N
North American Datum of 1983
(World Geodetic System 1984)

Additional information can be obtained at nauticalcharts.noaa.gov.

HORIZONTAL DATUM
The horizontal reference datum of this chart is North American Datum of 1983 (NAD 83), which for charting purposes is considered equivalent to the World Geodetic System of 1984 (WGS 84). Geographic positions related to the North American Datum of 1927 do not require conversion to NAD 83 for plotting on this chart.

