

NEW JERSEY LITTLE EGG HARBOR TO CAPE MAY



Chart 12316
Published at Washington, D.C.
U.S. DEPARTMENT OF COMMERCE
NATIONAL OCEANIC AND ATMOSPHERIC ADMINISTRATION
NATIONAL COAST AND GEODETIC SURVEY
NAD 83 PROJECTION AT SCALE 1:60,000
NORTH AMERICAN DATUM OF 1983
HORIZONTAL DATUM
SOUNDINGS IN FEET AT MEAN LOW WATER
Additional information can be obtained at nauticalcharts.noaa.gov

PORT INFORMATION

NAME	PLACE	SYMBOL	HEIGHT (Feet)	CHARACTER	REMARKS
Little Egg Harbor Light	Little Egg Harbor	2-1	100	Daymark	See Note 1
Little Egg Harbor Light	Little Egg Harbor	2-2	100	Daymark	See Note 1
Little Egg Harbor Light	Little Egg Harbor	2-3	100	Daymark	See Note 1
Little Egg Harbor Light	Little Egg Harbor	2-4	100	Daymark	See Note 1
Little Egg Harbor Light	Little Egg Harbor	2-5	100	Daymark	See Note 1
Little Egg Harbor Light	Little Egg Harbor	2-6	100	Daymark	See Note 1
Little Egg Harbor Light	Little Egg Harbor	2-7	100	Daymark	See Note 1
Little Egg Harbor Light	Little Egg Harbor	2-8	100	Daymark	See Note 1
Little Egg Harbor Light	Little Egg Harbor	2-9	100	Daymark	See Note 1
Little Egg Harbor Light	Little Egg Harbor	2-10	100	Daymark	See Note 1

NOTE 1
This chart is based on the latest available information. It is subject to change without notice. The U.S. Coast Guard is responsible for the accuracy of the information on this chart. The U.S. Coast Guard is not responsible for the accuracy of the information on any other chart.

NOTE 2
This chart is based on the latest available information. It is subject to change without notice. The U.S. Coast Guard is responsible for the accuracy of the information on this chart. The U.S. Coast Guard is not responsible for the accuracy of the information on any other chart.

NOTE 3
This chart is based on the latest available information. It is subject to change without notice. The U.S. Coast Guard is responsible for the accuracy of the information on this chart. The U.S. Coast Guard is not responsible for the accuracy of the information on any other chart.

NOTE 4
This chart is based on the latest available information. It is subject to change without notice. The U.S. Coast Guard is responsible for the accuracy of the information on this chart. The U.S. Coast Guard is not responsible for the accuracy of the information on any other chart.

NOTE 5
This chart is based on the latest available information. It is subject to change without notice. The U.S. Coast Guard is responsible for the accuracy of the information on this chart. The U.S. Coast Guard is not responsible for the accuracy of the information on any other chart.

NOTE 6
This chart is based on the latest available information. It is subject to change without notice. The U.S. Coast Guard is responsible for the accuracy of the information on this chart. The U.S. Coast Guard is not responsible for the accuracy of the information on any other chart.

NOTE 7
This chart is based on the latest available information. It is subject to change without notice. The U.S. Coast Guard is responsible for the accuracy of the information on this chart. The U.S. Coast Guard is not responsible for the accuracy of the information on any other chart.

NOTE 8
This chart is based on the latest available information. It is subject to change without notice. The U.S. Coast Guard is responsible for the accuracy of the information on this chart. The U.S. Coast Guard is not responsible for the accuracy of the information on any other chart.

NOTE 9
This chart is based on the latest available information. It is subject to change without notice. The U.S. Coast Guard is responsible for the accuracy of the information on this chart. The U.S. Coast Guard is not responsible for the accuracy of the information on any other chart.

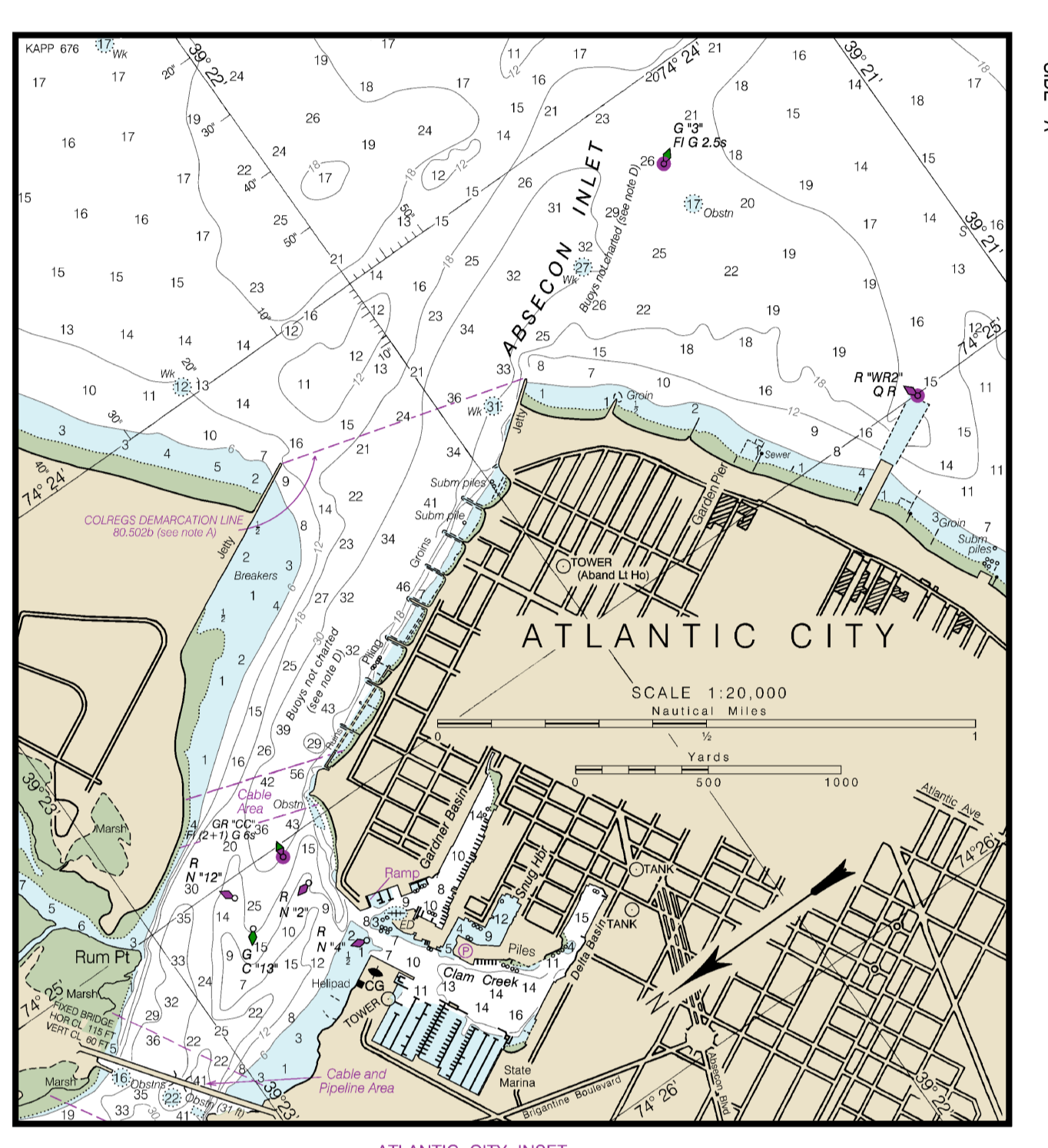
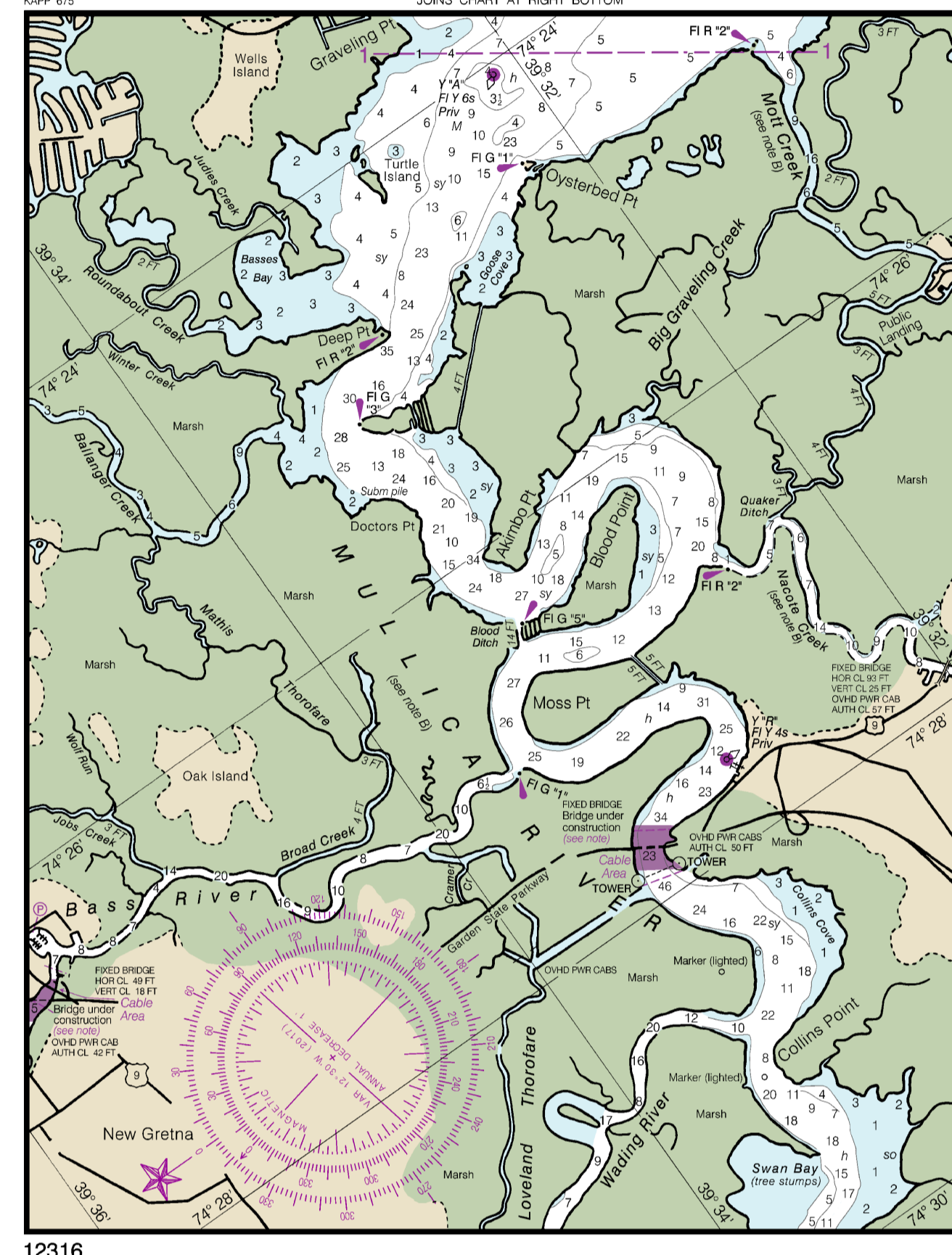
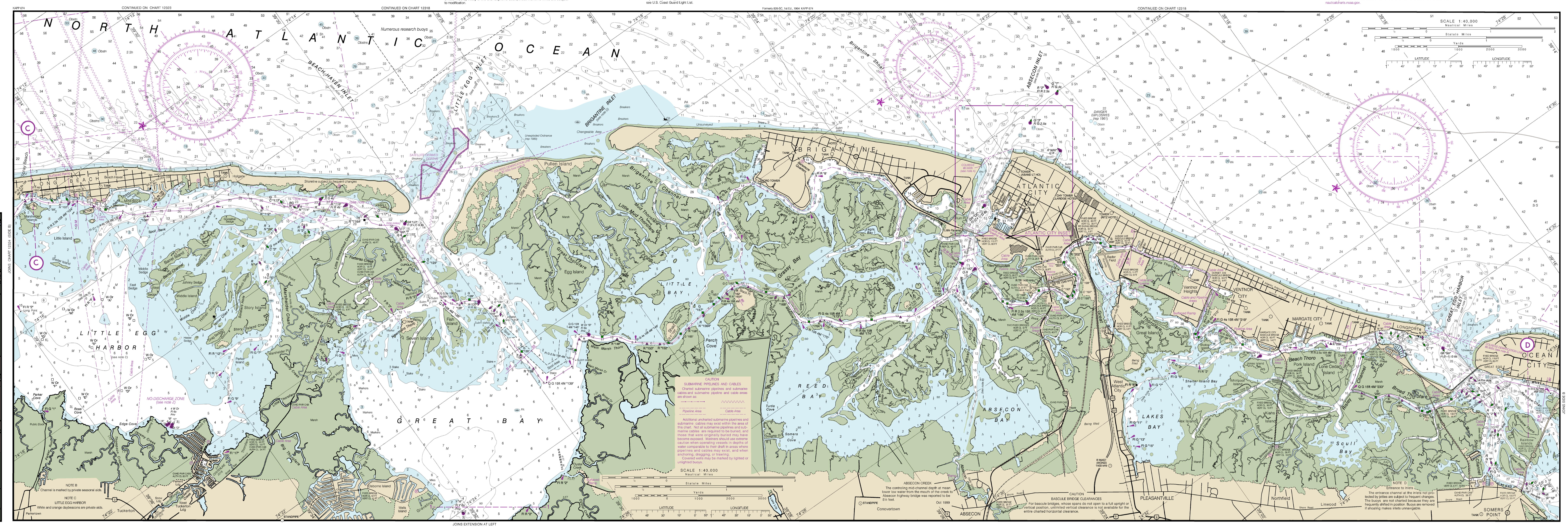
NOTE 10
This chart is based on the latest available information. It is subject to change without notice. The U.S. Coast Guard is responsible for the accuracy of the information on this chart. The U.S. Coast Guard is not responsible for the accuracy of the information on any other chart.

NOTE 11
This chart is based on the latest available information. It is subject to change without notice. The U.S. Coast Guard is responsible for the accuracy of the information on this chart. The U.S. Coast Guard is not responsible for the accuracy of the information on any other chart.

NOTE 12
This chart is based on the latest available information. It is subject to change without notice. The U.S. Coast Guard is responsible for the accuracy of the information on this chart. The U.S. Coast Guard is not responsible for the accuracy of the information on any other chart.

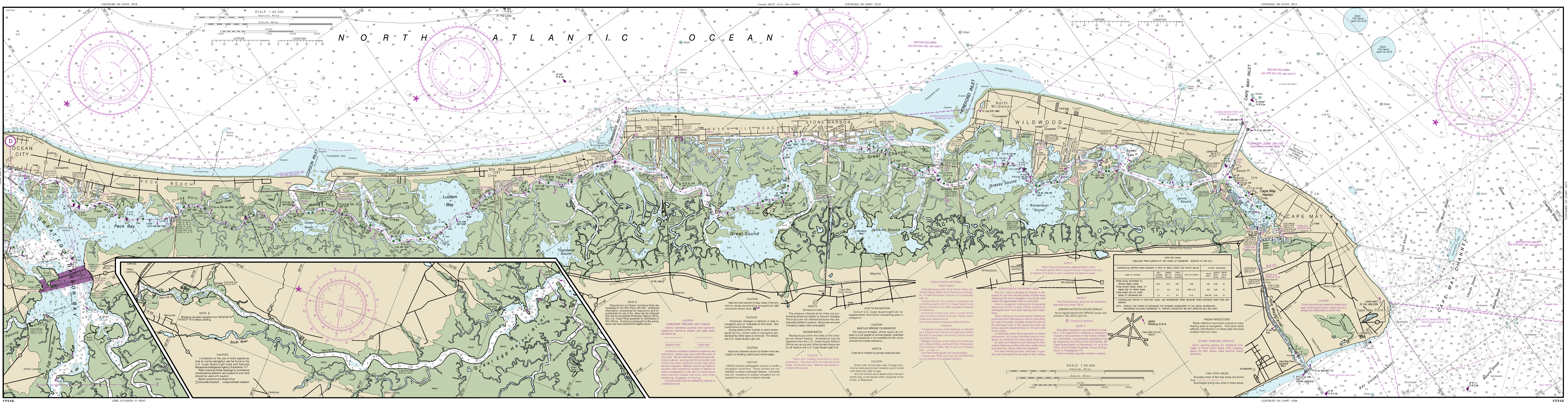
NOTE 13
This chart is based on the latest available information. It is subject to change without notice. The U.S. Coast Guard is responsible for the accuracy of the information on this chart. The U.S. Coast Guard is not responsible for the accuracy of the information on any other chart.

NOTE 14
This chart is based on the latest available information. It is subject to change without notice. The U.S. Coast Guard is responsible for the accuracy of the information on this chart. The U.S. Coast Guard is not responsible for the accuracy of the information on any other chart.



12316

ATLANTIC CITY AREA



12316

12316

This is the last edition of this chart. It will be replaced by 12317.

POD (printed on demand) is a user's requirement to carry a navigational chart published by the National Ocean Service in accordance with federal regulations, including but not limited to 33 C.F.R. 164.33(a), 33 C.F.R. 164.73(b), and 46 C.F.R. 25.225(a). POD charts meet stringent print standards and can be recognized by an official certification of authenticity printed on the chart. A list of POD providers can be found at nauticalcharts.noaa.gov/pod